



MONTHLY MEMBERSHIP PROGRESS REPORT

District 201N1

Results as of: 10/31/2018

GMT: ANN ELDRIDGE

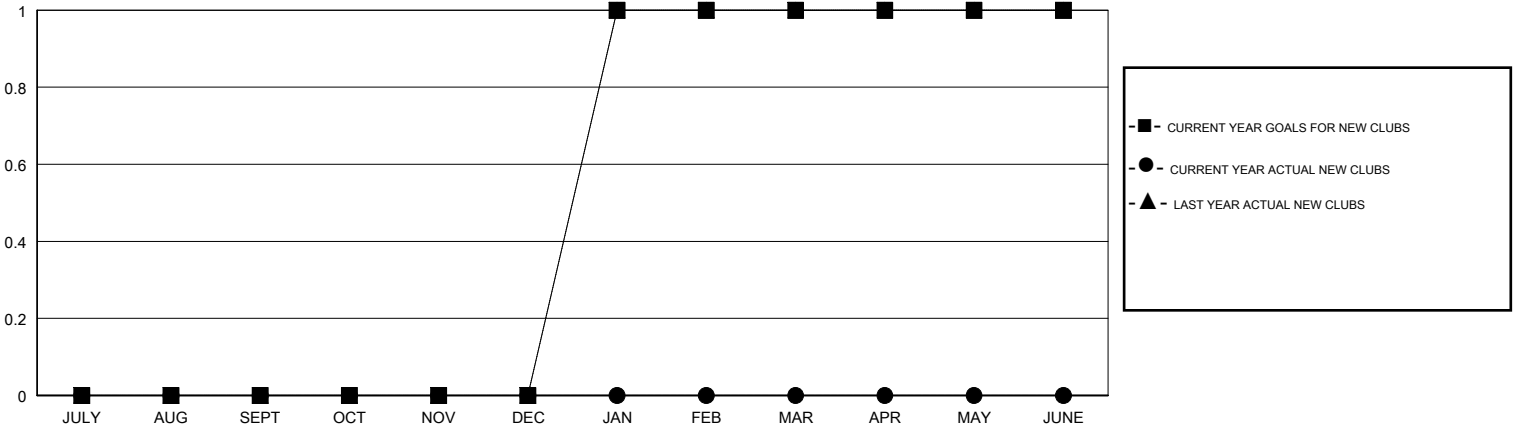
LOCATION AUSTRALIA

GMT CA

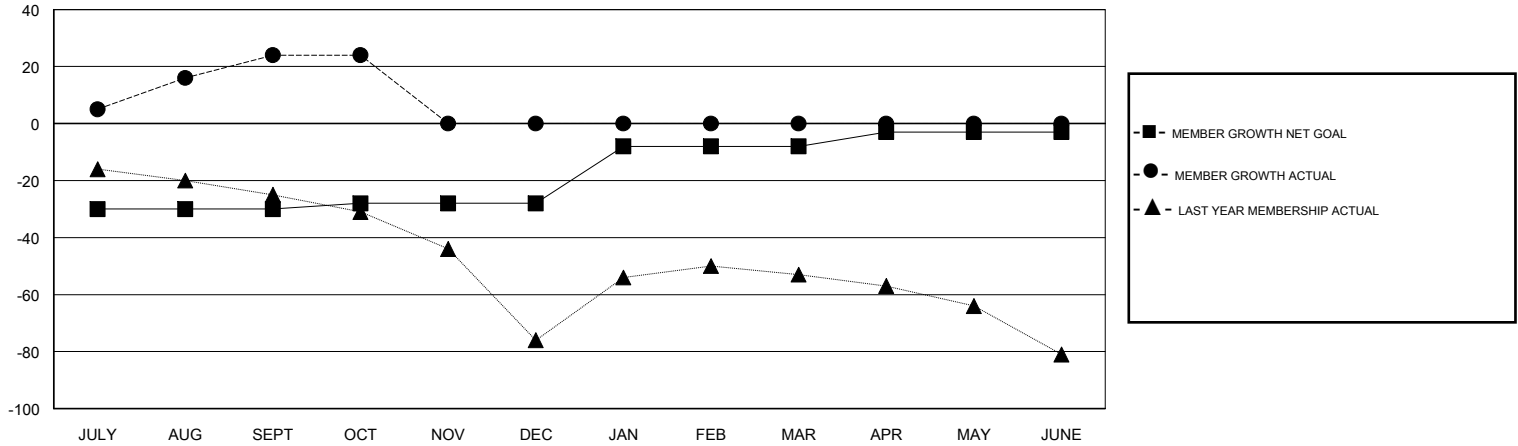
Clubs			
RESULTS FOR 2018-2019			
QUARTER	NEW CLUB GOAL	NEW CLUBS	DROPPED CLUBS
JULY/AUG/SEPT	0	0	0
OCT/NOV/DEC	0	0	0
JAN/FEB/MAR	1	0	0
APR/MAY/JUNE	0	0	0

Members			
RESULTS FOR 2018-2019			
QUARTER	MEMBER GROWTH NET GOAL	MEMBER GROWTH ACTUAL	DROPPED MEMBERS ACTUAL (including transfers)
JULY/AUG/SEPT	-30	75	42
OCT/NOV/DEC	2	8	8
JAN/FEB/MAR	20	0	0
APR/MAY/JUNE	5	0	0

GOALS AND ACTUAL NEW CLUBS CUMULATIVE



GOALS AND ACTUAL MEMBERS CUMULATIVE



DROPPED CLUBS: 0	25 CLUBS OF 61 ADDED 1 OR MORE NEW MEMBERS	<u>GENDER DISTRIBUTION</u> MALE 998 (70.88%) FEMALE 410 (29.12%) Women Percentage Fiscal Year Goal: 33%
<u>DROPPED MEMBERS</u> DECEASED 8 CLUB CANCELLED 0 OTHER 42 TOTAL 50	CLICK HERE FOR CUMULATIVE MEMBERSHIP DATA	TOTAL FAMILY UNIT MEMBERS 236 FAMILY MEMBERS PAYING HALF DUES 120